



DSP Wireless, Inc.

dspw.io

# RCB-W24A-LVDS

## WI-FI INTERFACE FOR NEURAL RECORDING AND DISPLAY.

The DSPW RCB-W24A-LVDS module is a low-cost, battery powered, 2.4GHz Wi-Fi interface for the Intan Technologies RHD2132 and RHD2116 amplifier (headstage) boards.

Useful for untethered, awake, behaving recordings of Action and Field potentials, ECoG, EKG, EMG.

### **Introductory price for NCM 18 is \$895.00.**

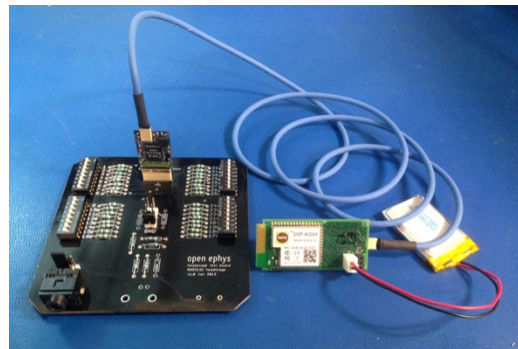
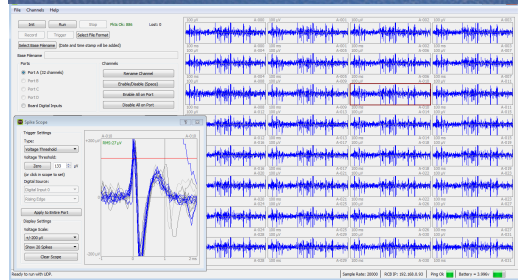
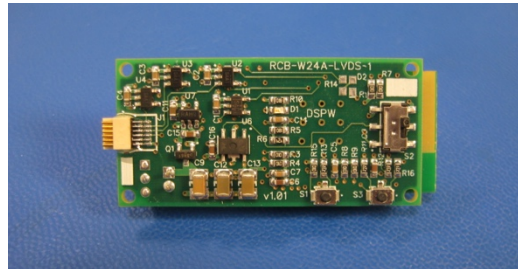
Limited number of units available at this price. Includes wired USB power cable and PC GUI for setup, waveform display and recording.

#### **User Interface included.**

- Modified subset of the Intan RHD GUI.
- Easy configuration, control, waveform display and recording to disk.
- Real time battery meter.
- Network packet loss and connection indicators.
- Windows 7 and 10 available today.
- MacOS and Linux versions in progress.

#### **RCB-W24A-LVDS Module Features:**

- 2.4GHz 802.11n Wi-Fi interface.
- 32 RHD2000 channels at 20ksp/s, 16 bits.
- 16 RHD2000 channels at 30ksp/s, 16 bits.
- Differential SPI LVDS signal interface.
- 12 Pin Omnetics LVDS connector.
- JST 2mm battery connector.
- PCB or external Antenna.
- Module footprint is 0.85" x 1.95".
- Embedded webserver for easy Wi-Fi Provisioning and configuration.
- Open API for network control.
- MIT MWorks network trigger plugin.



Come see us at **NCM 18 in Santa Fe.** Check out [www.dspw.io](http://www.dspw.io) for more info!

\*Battery and test board not included.  
\*Intan RHD board/cable not included.

### DSPW thanks the following companies and organizations.



the mworks project

